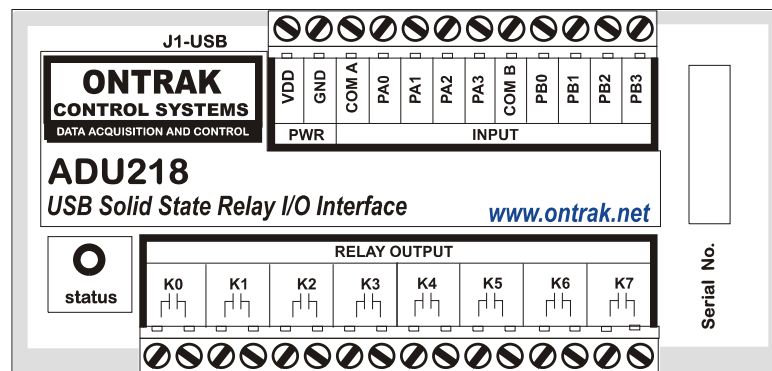
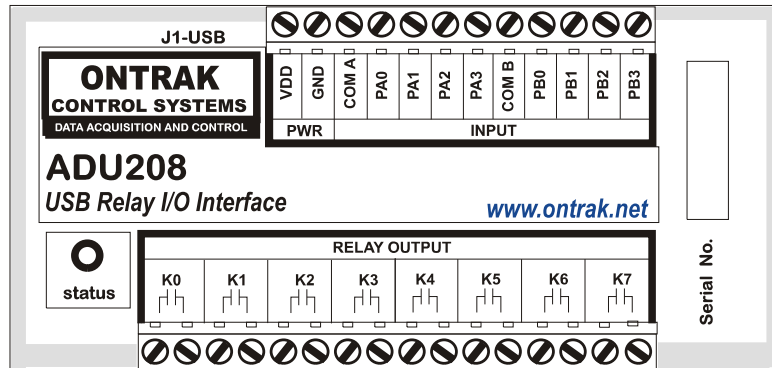


# ADU208/218 USB Relay I/O Interface User Manual

## Ver1.2



This ADU208/218 is warranted from defects in manufacturing for a period of 1 year and liability is limited to the purchase price of the product

C2003 Ontrak Control Systems Inc.

# Table Of Contents

1.	What is Included and Where to Start	4
2.	ADU208/218 USB Relay I/O Features	4
3.	Connecting the ADU208/218 to a USB Bus	5
4.	AduHidTest USB Device Test Program	6
5.	ADU208/218 Command Summary	10
6.	ADU208/218 Command Descriptions	11
	6a) Digital Input Port Commands	11
	6b) Relay Output Commands	13
	6c) Event Counter Commands	15
	6d) Watchdog Commands	16
7.	The ADU208/218 Software Development Kit ( SDK )	17
8.	Electrical Specifications	18

# 1. What is Included and Where to Start

The ADU208/218 ships complete with a 10' USB cable, this User Manual and a 3.5" diskette titled ADU-SDK.

The ADU-SDK diskette includes the following files;

AduHid.dll	DLL to allow applications to communicate with the ADU208/218 on the USB bus.
AduHidTest.exe	Software application used to test ADU products and allow programmers to become familiar with the ADU ASCII commands.
AduHidHelp.chm	Software development kit ( SDK ) in CHM ( Windows Help File ) format.
VisualC-EG	( folder) Visual C program examples from SDK
VisualBasic-EG	( folder) Visual Basic program examples from SDK
BorlandC-EG	( folder) Borland C program examples from SDK
Various support files	

First time users should first review the ASCII command set for the ADU208/218 and then use AduHidTest to become familiar with the operation of the various features of the product.

Note: The AduHid DLL requires one of the following Windows operating systems. 98SE, 2000 or XP

Application programs should be written using the Software Design Kit ( SDK ) located on the ADU-SDK diskette. The SDK contains explanations of how the various communication pipes can be accessed using the AduHid DLL. Example code is given for Visual Basic, Visual C and Borland C. The SDK help file is designed to be run on the development PC when programming. This allows programmers to cut-and-paste specific functions directly into an application. Additional examples and applications are posted on our web site at [www.ontrak.net](http://www.ontrak.net)

## 2. ADU208 / 218 USB Relay I/O Interface Features

- Provides a standard PC with PLC ( programmable logic controller ) functions.
- Low-cost .
- Bus Powered, No external power supply required.
- 8, N. O. relay contact outputs rated 5.0A @ 120VAC, 5.0A @ 30VDC ( **ADU208** )
- 8, Solid-State PhotoMOS Relay outputs rated 1.0A @ 120VAC, 1.0A @ 120VDC ( **ADU218** )
- 8 Digital inputs suitable for contact or TTL Input , also accept up to 28VDC .
- Inputs feature optical isolation to 3500V ( 500V channel to channel ).
- Programmable watchdog functions.
- Bi-colour LED status indicator.
- Self-resetting, fused 5V output.
- High quality cage-clamp type terminal blocks.
- Uses standard HID drivers included with Windows 98SE,2000,XP.
- Mini-driver ( DLL ) provided for use with VB,VC, LabVIEW and TestPoint.
- Programming examples and sample code included for VB, Visual C++ .
- Eight, 16-bit event counters.
- Programmable debounce setting for event counters.
- Meets IEC61000-4-2 ESD protection for USB port.
- Available in enclosure or as PCB only.

### 3. Connecting the ADU208 /218 to a USB Bus

The ADU208/218 can be connected to the USB bus via the enclosed 10' A-B USB cable. The cable provides both power and communications connections to the ADU208/218. When first connected, the STATUS led will turn RED indicating power is applied. A message will flash on the screen indicating;

**“New hardware Found”**

**ADU208 USB Relay I/O Interface**

Depending on the version of Windows , the host may prompt to search for a driver. Select,

**Let Windows Search for a Driver**

and click next.

After a few seconds, the STATUS led will turn green indicating enumeration is complete. The enumeration process is completely transparent to the application program as it is completed by the Windows operating system

The STATUS led will remain green unless a watchdog timeout ( See Watchdog Commands Section ) occurs.

The ADU208/218 can be connected directly to the host hub or either, external powered, or non-powered hubs.

**Caution: ( Use of System Standby ):** If the Windows operating system puts the system into “ Suspend ” mode, all USB hubs are issued a Reset when the Suspend mode is exited. This will cause the ADU208/218 to lose power briefly, resulting in the event counter data being lost and all relays to reset. Open the power options section in the Windows control panel and ensure “System Standby” is set to never.

**Caution: ( Use of PWR Terminals ):** The auxiliary power connections labelled VDD and GND are a non-isolated output and no external power supply should be connected to these terminals. The power output is provided to allow use of dry contact inputs with the digital input lines. If the supply is to be used with dry contact inputs, GND should be connected to COM A and/or COM B, and the dry contact connections made between VDD and the selected digital input line. If this power output is used to power external circuits, no more than 20mA should be drawn if all relays are to be energized at once. If no more than 4 relays are to be energized at one time, up to 50mA can be drawn from the VDD supply.

## 4. AduHidTest USB Device Test Program

AduHidTest is a USB Device test program used to test the connection of ADU data acquisition devices to a USB port. The program is also a useful tool to allow programmers to become familiar with the ADU command set. The program is located in the root directory of the ADU-SDK disk. The program can be run from floppy or transferred to the hard drive. Note that the program requires the AduHid.dll to operate and it should be copied to the same directory as the AduHidTest.exe file.

### Getting Started:

There are three steps in using a USB device in any application software. The three steps are ,

1. Obtain a handle for the ADU208/218.
2. Send commands to the ADU208/218.
3. Receive data from the ADU208/218.

### STEP 1: Obtain a handle for the ADU208/218

A handle is a unique code that application software uses to identify a USB device for the purpose of reading and writing to the device. A USB bus can have up to 128 devices connected to a single host and there are three criteria that can be used to open a handle. The three criteria are, Vendor ID, Product ID and Serial Number. If a single device is connected to the bus, any of the three criteria may be used. If multiple devices are connected, we recommend using the Serial Number to open the handle ( All ADU devices have their unique serial number printed on the top label ) The AduHidTest program main Window is shown in Figure 1.

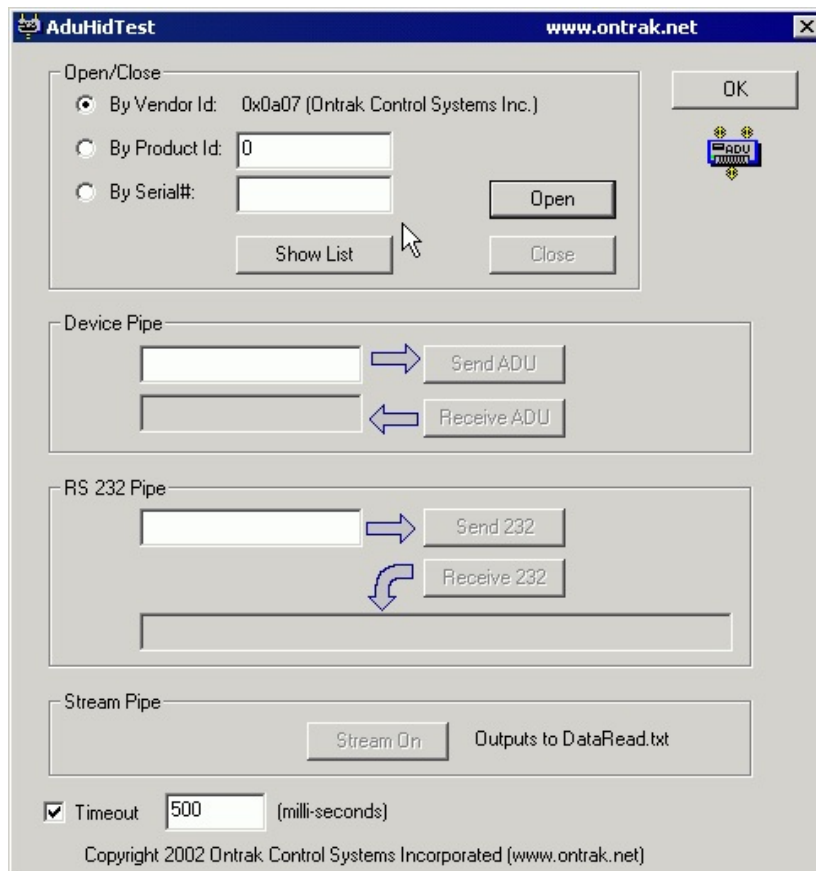


Figure 1: AduHidTest Main Window

The Open/Close section of the window is where the handle is determined. Click on the Show List button to view the devices connected to the USB bus. ( Note: Only ADU devices will be listed ) Figure 2 is the window that appears when the Show List Button is clicked.

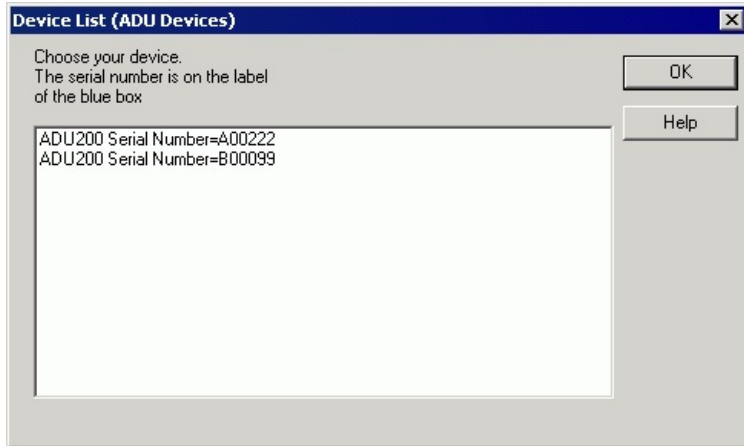


Figure 2: " Show List " Display

The display indicates that there are two ADU200 devices connected with serial numbers A00222 and B00099. Select a device by clicking on the desired device. The AduHidTest main window will now display the product ID and Serial number. Click the **By Serial #** radio button and then click **Open** to open the handle to the selected ADU200.

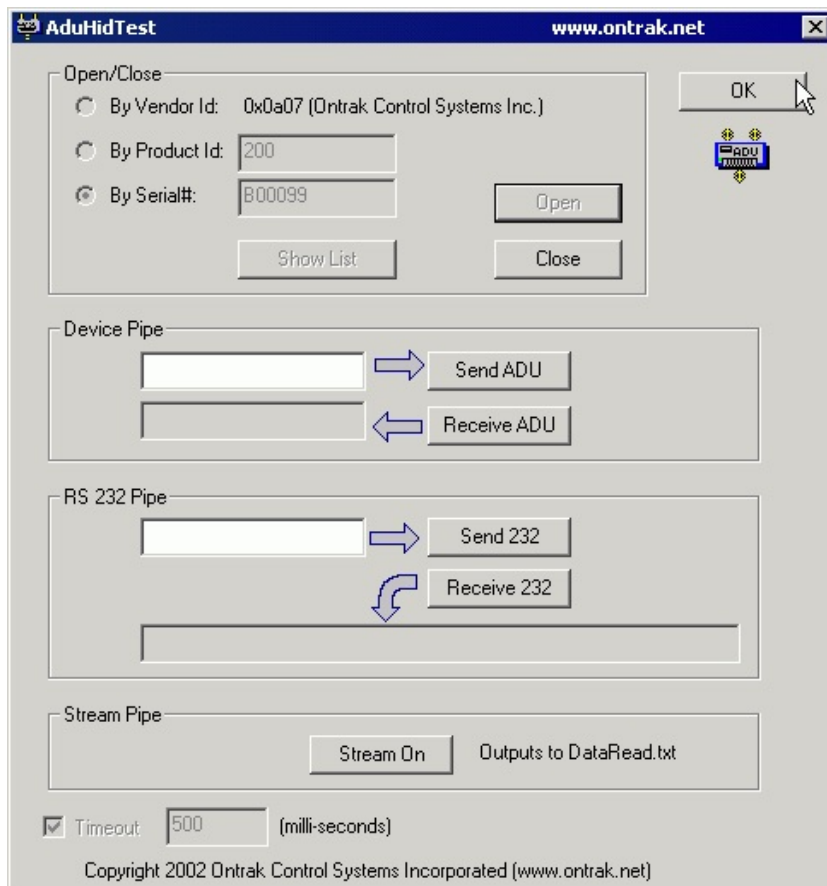


Figure 3: Connected to B00099

## STEP 2: Send Commands to the ADU208/218

Once connected, you may now send commands to the available "pipes" on the device. Pipes are the individual connections to functional sections of the ADU200. The Device Pipe is used to send standard ASCII ADU commands to control the peripherals built into the ADU200 such as the relay outputs or event counter inputs. Type "sk3" ( Close relay K3 ) into the device pipe send window and click Send ADU . Relay K3 on the ADU200 will close and the software will display a small "OK" next to the Send ADU button indicating the command was sent.

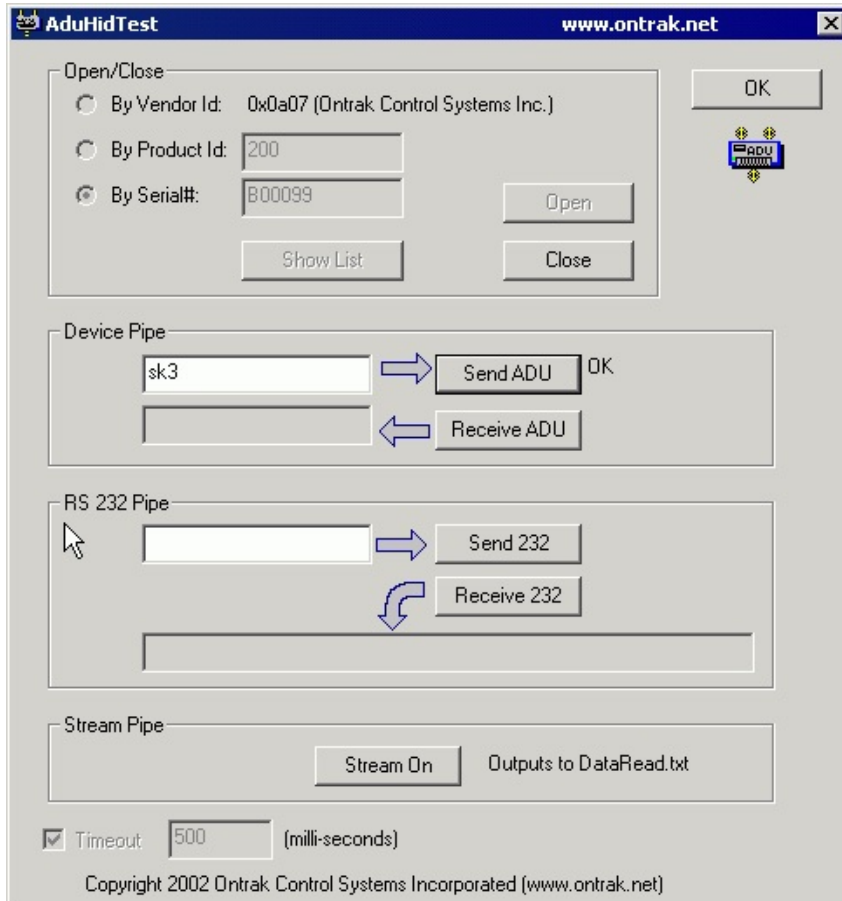


Figure 4: Sending "sk3" Command



### STEP 3: Receive Data from the ADU208/218

Some commands will cause a response to be sent from the ADU device to the host computer. For example, if an "re1" ( read event counter 1 ) command is sent, the ADU200 will send back the 5 digit count. To read responsive commands, simply click the Receive ADU button and the data will be displayed.

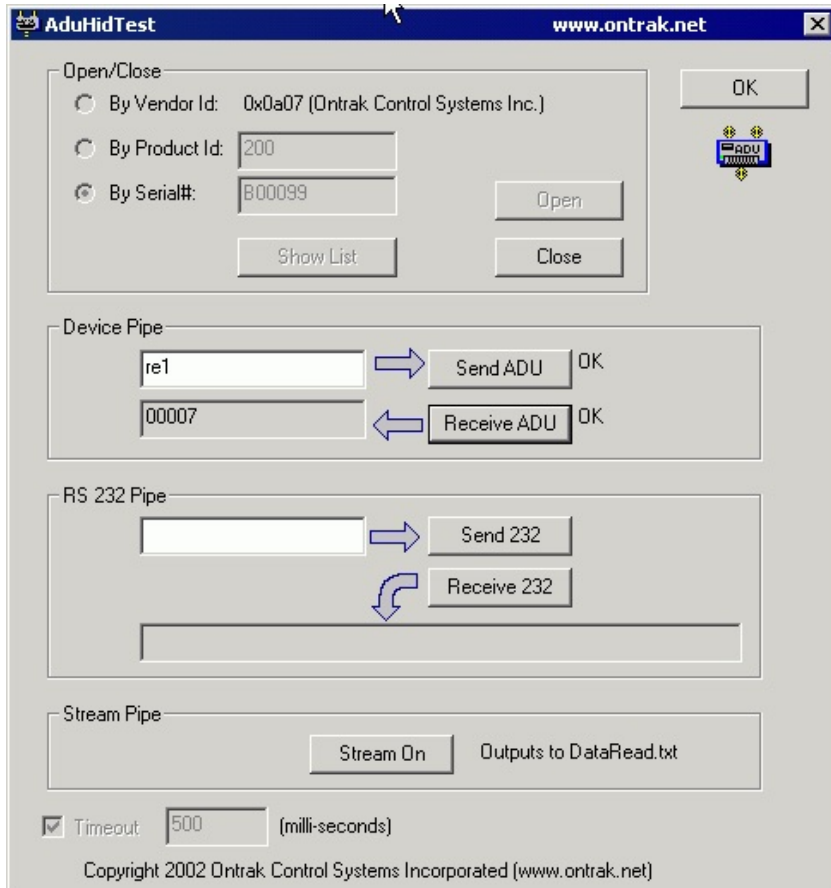


Figure 5: Sending "re1" and Receiving Count Data

**Note1:** The ADU208/218 does not support the RS232 pipe and so no explanation of its operation is listed in this document.

**Note2:** The ADU208/218 does not support the stream pipe and so no explanation of its operation is listed in this document.

## 5. ADU208/218 Command Summary

### DIGITAL COMMANDS ( PORT A and PORT B )

RPy <sub>n</sub>	Returns status of input line in PORT y specified by n ( n= 0 , 1, 2 or 3 ) ( y =A or B )
RPy	Returns status of PORT y in binary format. ( y =A or B )
PAy	Returns status of PORT y in decimal format. ( y =A or B )
PI	Returns status of PORT A and PORT B in decimal format.

### RELAY COMMANDS ( PORT K )

SK <sub>n</sub>	Sets relay specified by n ( n = 0-7 )
RK <sub>n</sub>	Resets relay specified by n ( n= 0 - 7 )
MKddd	Sets PORTK to decimal value dd ( dd= 0 to 255 )
RPK <sub>n</sub>	Returns status of relay specified by n ( n= 0 - 7 )
PK	Returns status of PORT K in decimal format.

### EVENT COUNTER COMMAND SUMMARY

RE <sub>x</sub>	Returns present count of event counter ( x = 0 - 7 )
RC <sub>x</sub>	Returns present count and clears event counter ( x = 0 - 7 )
DB <sub>n</sub>	Sets de-bounce time of event counters ( n=0,1 or 2 ) ( 0 =10ms, 1 = 1ms, 2 = 100us, )
DB	Returns present de-bounce setting.

### WATCHDOG COMMAND SUMMARY

WD <sub>n</sub>	Sets watchdog timeout length ( n = 0,1,2 or 3 ) ( 0 =WD OFF , 1 = 1s, 2 =10s, 3 = 1min. )
WD	Returns watchdog setting.

## 6. ADU208/218 Command Descriptions

All commands are specified as non-terminated ASCII strings. The maximum length of command and data strings is 7 bytes. Commands are passed via the AduHid DLL to the ADU208/218 as a seven byte packet and unused bytes are sent as NULL ( 00h ).

### 6a) DIGITAL INPUT PORT COMMANDS ( PORT A and PORT B )

The ADU208/218 device contains two 4-bit input ports labelled PORT A and PORT B. Both input ports are isolated from all other external connections, and from each other, using opto-isolators with better than 3000V isolation. Each of the two input ports has a COM connection ( COM A and COM B ) associated with it for connection of input device common voltages. Input devices can be connected using external DC voltages of up to 28V. The VDD output terminals provide a nominal 5VDC output that can be used as a supply to connect dry contact inputs ( switches, pushbuttons etc ) to the digital inputs. When using the internal VDD supply to connect dry contact inputs, GND must be connected to COM A or COM B ( or both ) to allow a return path for input current. Figure 6A shows how dry contacts can be connected using the ADU208/218 internal supply. Note that GND is connected to COM A.

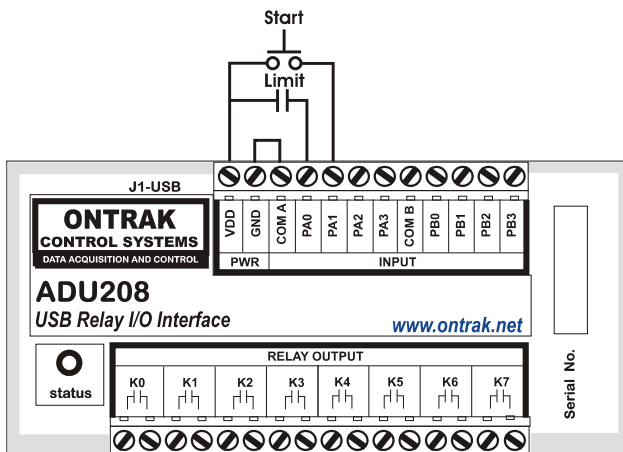


Figure 6A: Dry Contact Connections Using Internal VDD Supply.

Figure 6B demonstrates the connection of dry contact inputs using an external DC supply. Note that the common of the external supply is connected to COM B, as the inputs used in this example are PB2 and PB3.

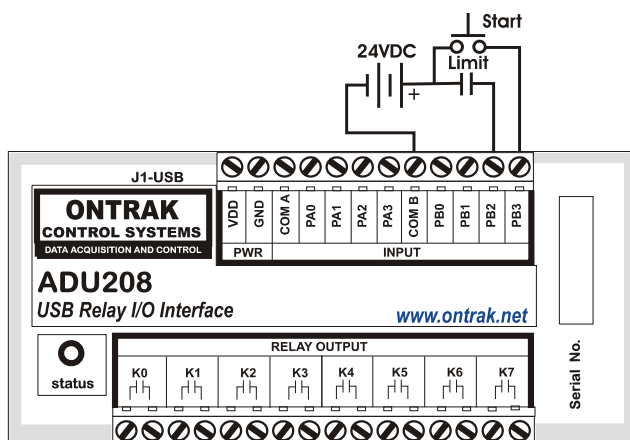


Figure 6B: Dry Contact Connections Using External Supply.

**RPyn** Returns status of input line in PORT y specified by n ( n= 0 , 1, 2 or 3 ) ( y =A or B )  
# of Bytes 4  
Response 1 byte ( 0 or 1 )

Example; RPA2 ;PA2 is High.  
1 ( response)

**RPy** Returns status of PORT A in binary format. ( y =A or B )  
# of Bytes 3  
Response 4 bytes ( 0000 tp 1111 binary ) ( order is MSB-LSB )

Example; RPA ;PA2 is High, PA0,PA1 and PA3 are Low  
0100 ( response)

**Py** Returns status of PORT y in decimal format. ( y =A or B )  
# of Bytes 2  
Response 2 bytes ( 00 to 15 in decimal )

Example; PA ;All lines are High..  
15 ( response)

The following command has been included to allow polling of both digital ports with a single command. The response to the PI command is an 8 bit response represented in decimal format ( 000 to 255 ). The LSB of the response is PA0 and the MSB is PB3.

**PI** Returns status of PORT A and PORT B in decimal format.  
# of Bytes 2  
Response 3 bytes ( 000 to 255 in decimal )

Example1; PI ;PB3 is HIGH, all others are LOW  
128 ( response)

Example2; PI ;PA0 and PA1 are HIGH, all others are LOW  
003 ( response)

## 6b) RELAY COMMANDS ( PORT K )

There are 8 type A relay contact outputs in the ADU208 rated at 5A@120VAC or 5A @ 30VDC while the ADU218 features 8 Solid-State PhotoMOS relay outputs rated at 1A@120VAC or 1A @120VDC . The functionality of the commands between the two products is identical. AC or DC load may be connected using the outputs as switches to apply external power to loads. Figures 6C and 6D show the proper connection of DC and AC loads.

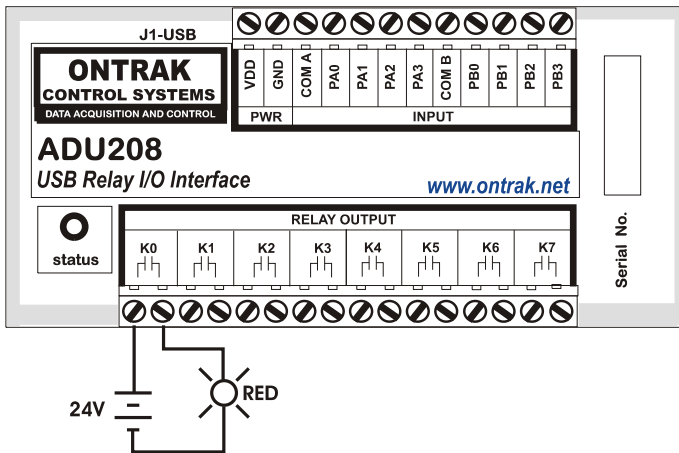


Figure 6C: Connection of DC Loads

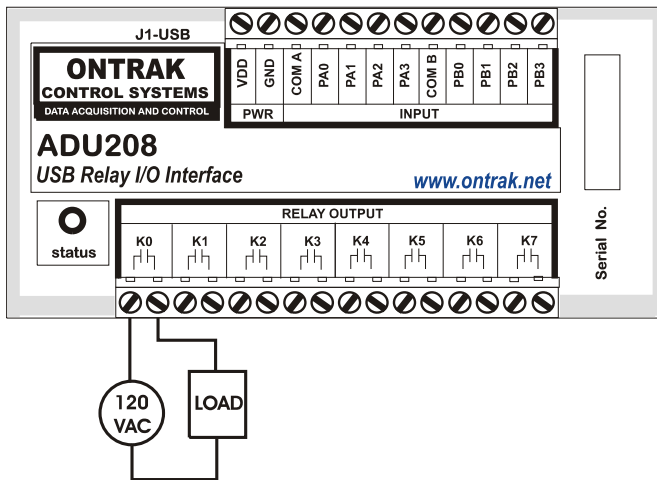


Figure 6D: Connection of AC Loads

The relays may be SET ( ON ) or RESET ( OFF ) individually or as an 8 bit port. The relay commands include;

**SKn**                SETS ( ON ) relay specified by n ( n = 0-7 )  
                           # of Bytes            3

Response NONE  
Example; SK2 ;closes contact K2

**RKn** RESETS ( OFF ) relay specified by n ( n= 0 - 7 )  
# of Bytes 3  
Response NONE  
Example; RK1 ;opens contact K1

**MKddd** Sets PORTK to decimal value ddd ( ddd= 0 to 255 ) ( K7-MSB, K0 = LSB )  
# of Bytes 3 , 4 or 5  
Response NONE  
Example; MK128 ;SETS K7, RESETS K0 - K6.

**RPKn** Returns status of relay specified by n ( n= 0 - 7 )  
# of Bytes 4  
Response 1 byte ( 0 or 1 )  
Example; RPK2 ;Relay K2 is closed.  
1 ( response)

**PK** Returns status of PORT K in decimal format.  
# of Bytes 2  
Response 3 bytes ( 000 to 255 in decimal )  
Example; PK ;K0 -K3 are SET ( ON ), K4-K7 are RESET ( OFF ).  
015 ( response)

## 6c) EVENT COUNTER COMMANDS

Each digital input line on PORT A and PORT B has an event counter associated with it. The event counters count low to high transitions and store them in a 16 bit counter that can be read or, read and cleared. The event counters are numbered 0 to 7 and count from 00000 to 65535 followed by a rollover to 00000. The following table identifies the counter assignments;

Counter	PORT Assignment
0	PA0
1	PA1
2	PA2
3	PA3
4	PB0
5	PB1
6	PB2
7	PB3

The event counters are read using either the RE command or the RC command if the counter is to be clearing following the read.

**REx** Returns present count of event counter ( x = 0 - 7 )  
 # of Bytes 3  
 Response 5 bytes ( 00000 to 65535 in decimal )  
 Example; RE1 ;PA1 has seen 23 Low to High Transitions  
 00023 ( response)

**RCx** Returns present count and clears event counter ( x = 0 - 7 )  
 # of Bytes 3  
 Response 5 bytes ( 00000 to 65535 in decimal )  
 Example; RC3 ;PA3 has seen 156 Low to High Transitions  
 00156 ( response ) ; ( Event Counter 3 is cleared )

The de-bounce time of the event counters can be set from 100us to 10ms ( DEFAULT = 1 ms ) using the DB command as outlined below;

**DBn** Sets de-bounce time of event counters ( n=0,1 or 2 )  
 ( 0 =10ms, 1 = 1ms ( Default ) , 2 = 100us )  
 # of Bytes 3  
 Response NONE  
 Example; DB0 ;De-bounce is set to 10ms

**DB** Returns present de-bounce setting.  
 # of Bytes 2  
 Response 1 bytes ( 0,1, or 2 )  
 Example; DB ;De-bounce is set to 10ms  
 0 ( response)

**6d) WATCHDOG COMMANDS**

A programmable host watchdog is provided to allow predicted operation in the event the host PC stops communicating with the ADU208/218. Upon timeout, all relays are RESET ( OFF ), WD =0, and the status indicator will turn from GREEN to RED. Any command sent to either the ADU208/218 by the host application, will reset the watchdog timer. For example, if the watchdog is enabled with a timeout of 10 seconds, the host must send at least one command every 10 seconds or a timeout will occur. To determine if a watchdog timeout has occurred, read the timer setting. If the watchdog was set to 2, and no command was sent for 10 seconds, a 0 will be returned indicating a timeout has occurred. Following a timeout, the host must reload the timer setting as a timeout causes the setting to be cleared to 0 ( WD OFF )

**WDn**                 Sets watchdog timeout length (n = 0, 1, 2 or 3 )  
                          ( 0 =WD OFF ( DEFAULT ) , 1 = 1s, 2 =10s, 3 = 1min. )  
                          # of Bytes         3  
                          Response         NONE

Example;             WD2                                 ;Sets WD timeout to 10s

**WD**                             Returns watchdog setting.  
                          # of Bytes         2  
                          Response         1 bytes ( 0,1,2 or 3 )

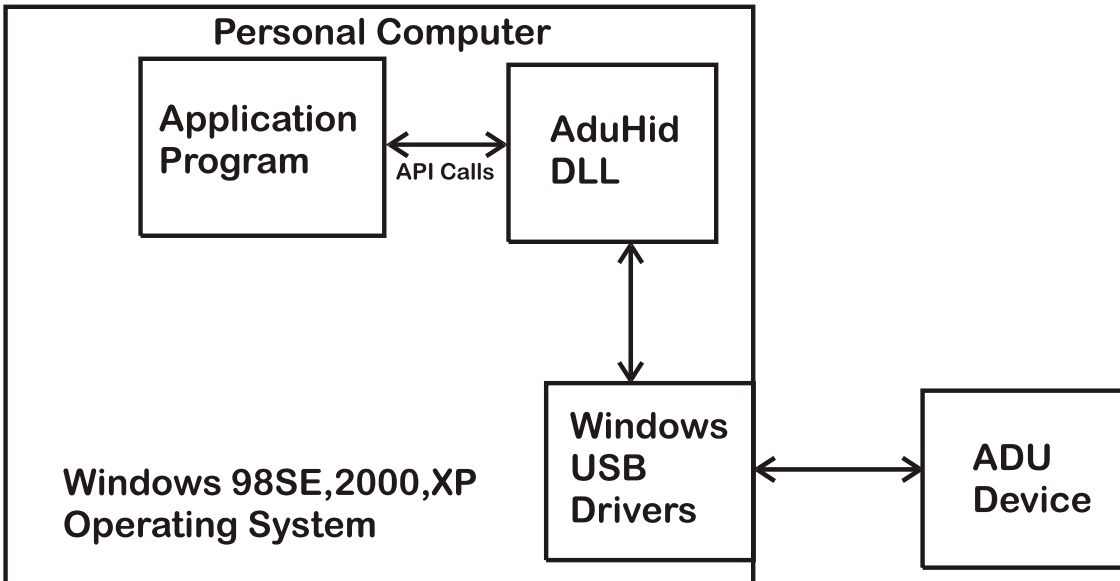
Example;             WD                                 ;Watchdog not enables or timeout has occurred.  
                          0 ( response)

**Notes to Watchdog Operation:**             1. The watchdog is disabled upon power-up.



## 7. The ADU208/218 Software Development Kit (SDK)

The ADU208/218 connects to the host computer using a USB Ver1.1 Low-Speed connection allowing a guaranteed latency between data transfers of 10ms. Application programs must use the AduHid DLL provided to send commands and receive data from the ADU208/218. This is done using simple API calls from the application language.



### AduHid DLL location

The SDK is located on the ADU-SDK diskette and includes explanations of how the pipes to the various ADU208/218 features operate.

The SDK contains examples for use with Visual Basic, Visual C and Borland C. Additional programming tutorials and applications are located at [www.ontrak.net](http://www.ontrak.net)

	<b>ADU208</b>	<b>ADU218</b>
Supply Current ( All relays OFF )	12mA Typ. 15mA MAX	12mA Typ. 15mA MAX
Supply Current ( All Relays ON )	165mA Typ. 180mA MAX	85mA Typ. 95mA MAX
Operating Temperature	0-50C	0-50C
<b>Relay Outputs ( 8 )</b>		
Type	Mechanical TYPE A	Solid-State PhotoMOS
AC Ratings	5A @ 120 VAC	1A @ 120 VAC
DC Ratings	5A @ 30 VDC	1A @ 120 DC
<b>Digital Inputs ( 8 )</b>		
Vin HIGH ( MAX )	28VDC	28VDC
Vin HIGH ( MIN )	2VDC	2VDC
Vin LOW ( MAX )	0.7VDC	0.7VDC
Vin LOW ( MIN )	0VDC	0VDC
<b>Input Z ( MIN )</b>	2700 Ohms	2700 Ohms
<b>Event Counters ( 8 )</b>		
Resolution	16 Bits	16 Bits
Input Type	Contact, TTL, Voltage up to 28VDC	Contact, TTL, Voltage up to 28VDC
Max Frequency	1KHZ	1 KHZ
Input Z	2700 Ohms	2700 Ohms
Programmable DeBounce	10ms, 1ms, 100us or NONE	10ms, 1ms, 100us or NONE
Mounting Options	Desktop, Velcro, DIN Rail	Desktop, Velcro, DIN Rail